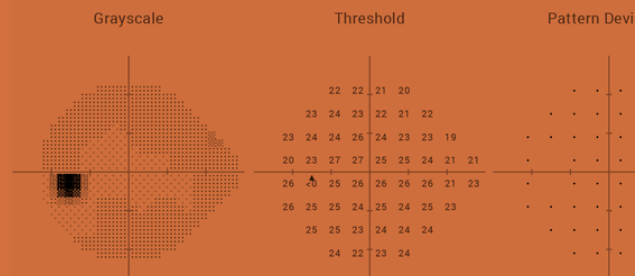


## Superior 64 Ptosis Exam Your Comprehensive Guide



### [Superior 64 Ptosis Exam Overview](#)

The Superior 64 Visual Field Exam at a Glance

List of Ocular Diseases Monitored and Diagnoses Identified by the Superior 64 Visual Field Test

Billing and Coding for the Superior 64 Visual Field Exam

Start Conducting Comprehensive Eye Exams with Carrot

### Most visual field exams focus on the central vision and miss changes above fixation.

If your patients' visual complaints relate to superior visual field loss or you need to document obstruction from ptosis, the Superior 64 is precisely the exam you need.

This test is a suprathreshold screening protocol that's typically conducted with a tabletop perimeter. It's not part of standard screenings, and not every practice offers this specialty test. While Carrot's [Superior 36 visual field exam](#) is an accessible way to measure ptosis, the Superior 64 remains relevant for practices managing patients with functional eyelid issues or upper visual field problems.

### Superior 64 Visual Field Exam Overview

The Superior 64 is a suprathreshold test that samples 64 points in the upper hemifield, extending up to 60 degrees above fixation. This test enables practitioners to assess the entire upper visual field and collect the most accurate data on ptosis and dermatochalasis.

Ptosis, also known as blepharoptosis, is a common condition that causes a visibly drooping eyelid. Most often age-related, it can be both a cosmetic and a quality-of-life complaint. Similarly, patients with dermatochalasis may have so much excess skin on the upper eyelid that it can interfere with their superior visual field. In most cases, the Superior 36 test can provide sufficient information for oculoplastic referrals. However, to meet some CMS or insurance documentation requirements, more data may be requested, which is where the Superior 64 comes in.

Compared to the Superior 36, the Superior 64 is more robust. As its name implies, the Superior 64 collects nearly twice as many data points as the Superior 36. It's more sensitive in detecting functional vision loss due to ptosis or dermatochalasis. It's often preferred for surgical documentation, but requires more time to complete. If you offer oculoplastic surgery or plan to refer patients, this test should provide the necessary details for insurance coverage.

## [Superior 64 Ptosis Exam Overview](#)

The Superior 64 Visual Field Exam at a Glance

List of Ocular Diseases Monitored and Diagnoses Identified by the Superior 64 Visual Field Test

Billing and Coding for the Superior 64 Visual Field Exam

Start Conducting Comprehensive Eye Exams with Carrot

## Academic references and clinical validation



[A study of the HFA Superior 64](#) confirmed that this visual field exam can detect the amount of superior visual field loss caused by ptosis.



[This article](#), published by the National Library of Congress, discusses acquired blepharoptosis: prevalence, diagnosis, and current treatment options.



This [OD's Guide to Ptosis Workup](#) provides guidelines on monitoring and evaluating ptosis patients, with an emphasis on acquired forms.

**30 days free.**  
**No strings attached.**

We are confident you'll love Carrot just like the 2,400+ doctors who have already made the switch.

[Start your 30-day trial](#)



Superior 64 Ptosis Exam Overview

[The Superior 64 Visual Field Exam at a Glance](#)

List of Ocular Diseases Monitored and Diagnoses Identified by the Superior 64 Visual Field Test

Billing and Coding for the Superior 64 Visual Field Exam

Start Conducting Comprehensive Eye Exams with Carrot

## The Superior 64 Visual Field Exam at a Glance

This test can be conducted using a [tabletop perimeter](#) device, such as the [Humphrey Field Analyzer](#). In this test, the patient is presented with 64 suprathreshold points in a hemispheric grid, and they'll be asked to respond when they can see the stimuli. This test takes several minutes per eye, so it requires dedicated time in your workflow.

### Pros and Cons of the Superior 64 Visual Field Exam

We know the Superior 64 visual field exam is efficient, useful, and widely used, but there are pros and cons to incorporating this test into your routine.

PROS	CONS
More abbreviated than a complete visual field exam but more robust than the Superior 36, this test collects very detailed information within a specific region of the visual field.	The Superior 64 lacks detailed decibel-level mapping and only measures the presence or absence of vision.
For patients who need blepharoplasty, the Superior 64's data will provide quality information to guide treatment.	This test is specifically designed to measure the superior visual field; therefore, it is not applicable in general screenings and cannot replace other visual field exams.
Test results meet Medicare and insurance documentation requirements for functional eyelid surgery.	The Superior 64 is limited to only a few perimeters, so it's not always an accessible exam.

Superior 64 Ptosis Exam Overview

The Superior 64 Visual Field Exam at a Glance

**List of Ocular Diseases Monitored and Diagnoses Identified by the Superior 64 Visual Field Test**

Billing and Coding for the Superior 64 Visual Field Exam

Start Conducting Comprehensive Eye Exams with Carrot

## List of Ocular Diseases Monitored and Diagnoses Identified by the Superior 64 Visual Field Test

<p><b>Ptosis (Blepharoptosis)</b></p>	<p>Weak upper eyelid muscles can lead to noticeable <a href="#">drooping</a>. This, in turn, can lead to interference with the superior visual field. The Superior 64 is specifically designed to identify obstructions.</p>
<p><b>Dermatochalasis</b></p>	<p>“Hooded” upper eyelids with excess skin can obstruct vision. Taping and testing with the Superior 64 can reveal the extent of this <a href="#">obstruction</a>.</p>
<p><b>Brow Ptosis</b></p>	<p>Patients with very <a href="#">low-lying eyebrows</a> can experience a reduced superior visual field. This test can document the condition and inform corrective surgeries.</p>
<p><b>Nonarteritic Anterior Ischemic Optic Neuropathy (NAION)</b></p>	<p>Altitudinal defects, both superior and inferior, may be associated with <a href="#">NAION</a>. You can map and track visual field loss with precision using the Superior 64.</p>

Superior 64 Ptosis  
Exam Overview

The Superior 64  
Visual Field Exam  
at a Glance

List of Ocular Diseases  
Monitored and  
Diagnoses Identified  
by the Superior 64  
Visual Field Test

[Billing and Coding  
for the Superior 64  
Visual Field Exam](#)

Start Conducting  
Comprehensive  
Eye Exams with Carrot

## Billing and Coding for the Superior 64 Visual Field Exam

The Superior 64 screening pattern qualifies as an extended visual field test under [CPT 92083](#). Reimbursement under the [CMS Physician Fee Schedule](#) can be between \$25 to \$80 per eye. Your actual reimbursement will depend on practice location, setting, and other factors.

### When is the Superior 64 visual field test required?

The Superior 64 is not a common exam, but when it's needed, it can be instrumental. This test is mainly reserved for patients with eyelid conditions, such as ptosis, dermatochalasis, or brow ptosis, who are seeking treatment. After surgery, you can use this test to monitor recovery.

### Is the Superior 64 required for driver's licenses?

No, this test is used specifically for upper visual field testing and isn't applicable for driver's licenses. Standard acuity tests, such as the Esterman or Full Field 120, should be used to meet licensing requirements.

Superior 64 Ptosis Exam Overview

The Superior 64 Visual Field Exam at a Glance

List of Ocular Diseases Monitored and Diagnoses Identified by the Superior 64 Visual Field Test

Billing and Coding for the Superior 64 Visual Field Exam

[Start Conducting Comprehensive Eye Exams with Carrot](#)

## Start Conducting Comprehensive Eye Exams with Carrot

Although the Superior 64 isn't currently available with Carrot, our portable, comfortable, patient-friendly headset includes a [test suite that fits any practice](#). Instead of a tabletop perimeter that requires its own darkened room and may not be accessible to patients with mobility issues, Carrot can be conducted anywhere your patients feel comfortable. Fast test times and easy EHR integration will fit seamlessly into your workflow.

### Ready to get started?

Schedule a demo or begin your 30-day free trial of Carrot to offer an exceptional eye exam experience in your practice.

[Book a demo](#)

[Start your 30-day trial](#)



Questions? Contact [sales@carrot.io](mailto:sales@carrot.io) talk to a Carrot expert today.