

The Top 9 Must-Haves When Choosing a Visual Field Exam Solution



Visual field testing is essential for comprehensive eye care. The tools and technology you use to test your patients are vital to your diagnostic and progression monitoring capabilities.

Your patients have come to you and your practice because they believe you will ensure the very best in eye care services. Give them what they deserve by equipping your team with visual exam capabilities that work as hard as you do.

Here are the top nine must-haves when choosing a visual field exam solution.

1

Reliable Support

1-800 numbers that lead to massive call centers are red flags. Your staff needs onboarding, training, support, and access to people who stand behind their product. If the support experience doesn't feel personal, and you don't feel like a valued partner, walk away.



2

Comprehensive Testing Capabilities

No matter how many office locations you may have, and how efficient your staff is each day, you will always be bound by space and time limitations. That means every piece of equipment you choose needs to 10X your efficiency and save space. Choose a visual field solution that doesn't require a dark room of its own and that can conduct other exams, like extraocular motility (EOM) or color vision.



3

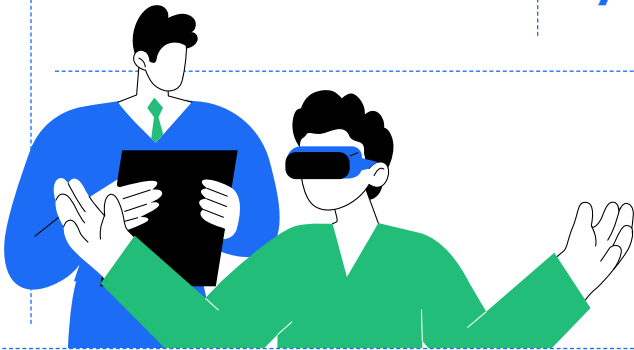
A Company with a Proven History of Visionary Innovation

It took you nearly a decade to complete the education needed to practice in your field, yet any startup can attempt to sell you a product and claim it is "safe for patient use." Be sure to vet any prospective partners thoroughly. Ask how long they have been established and for a peer referral or testimonial. *Longevity is reliability is integrity.* And while you're validating your prospective partner's capabilities, see numbers four and five on this list.

4

Clinical Confidence

Choose a solution with robust clinical validation, demonstrating its reliability for confident diagnoses. You should question the efficacy of a prospective partner that can't show you third-party validation reports or confirm which clinicians help advise and test their exams.



Longevity
= reliability
= integrity

5

Regulatory Compliance and Quality Assurance

In the United States

Ensure patient safety and regulatory compliance by choosing a Class I medical device registered and listed with the FDA. Look for MDSAP certification, illustrating compliance with ISO 13485 standards for medical device quality management systems.

In Canada

Verify the solution is a Class II medical device and Health Canada approved for use in Canada.



6

Flexible Payment Options

Consider a subscription-based payment model for predictable costs, easy upgrades, and reduced upfront investment. Especially if you're launching a cold start practice or need to scale your equipment across multiple locations.

7

EHR/EHM Integration Capabilities

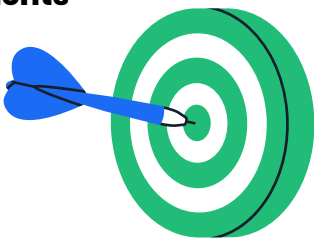
Streamline your workflow with DICOM integration options, enabling patient data transfers into your existing Electronic Health Record (EHR) and Picture Archiving and Communication Systems (PACS).



8

A Commitment to Continual Advancements

Ensure your investment remains current with a solution that offers continual software updates, providing access to the latest features and improvements. After all, you're constantly learning and improving your skills. Your partners should too.



9

Long-Term Assurance

Accidents happen. Especially when patients are involved. Protect your investment with a comprehensive lifetime warranty, offering peace of mind and minimizing long-term costs.



Final Words of Advice

By prioritizing these factors, you can feel confident that you've made a responsible selection for your visual field testing solution, so you can get back to what matters most — providing exceptional eye exam experiences for your patients and an exceptional working environment for your staff.

About the Author Virtual Field

Virtual Field delivers an exceptional eye exam experience. Eye care professionals, including ophthalmologists and optometrists, examine patients faster, more efficiently, and more comfortably than ever before. Exams include Visual Field, 24-2, Kinetic Visual Field (Goldmann Perimetry), Ptois, Esterman, Color Vision, Pupillometry, Extraocular Motility (EOM), and more.

